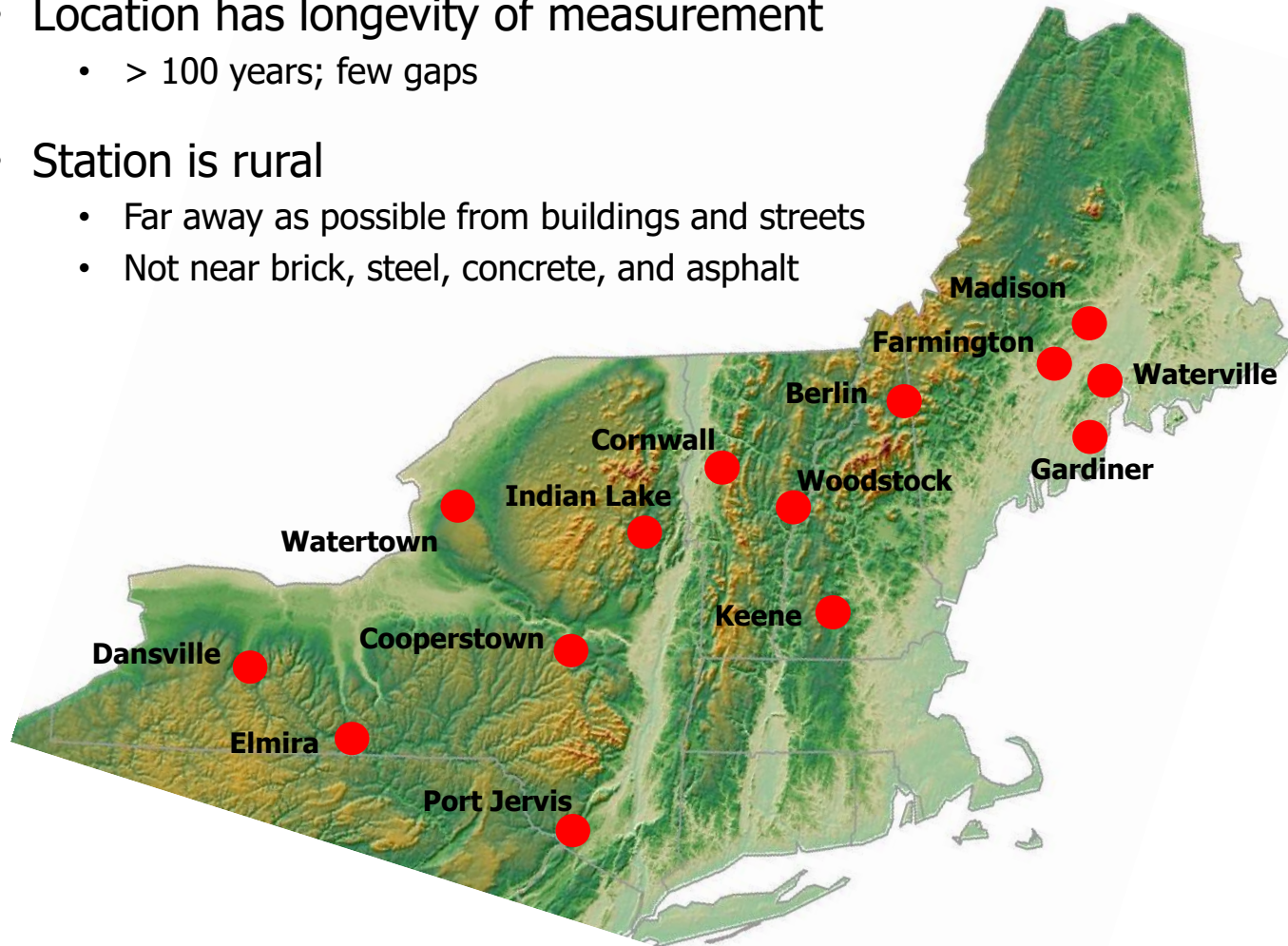


New England & New York State NWS Locations

- Location has longevity of measurement
 - > 100 years; few gaps
- Station is rural
 - Far away as possible from buildings and streets
 - Not near brick, steel, concrete, and asphalt



New England & New York State Summary – 1

Location	Decade of Maximum Temperature	Recent Decade
Port Jervis	1921 – 1930 Days above 90F: 192 Mean high temp: Summer : 83F, Winter: 39F	Days above 90F: 84 Mean high temp: Summer: 82F, Winter: 38F
Elmira	1946 – 1956 Days above 90F: 211 Mean high temp: Summer: 84F, Winter: 39F	Days above 90F: 108 Mean high temp: Summer: 82F, Winter: 36F
Watertown	1916 – 1925 Days above 90F: 49 Mean high temp: Summer: 79F, Winter: 32F	Days above 90F: 22 Mean high temp: Summer: 78F, Winter: 32F
Dansville	1944 – 1953 Days above 90F: 317 Mean high temp: Summer: 85F, Winter: 39F	Days above 90F: 113 Mean high temp: Summer: 82F, Winter: 38F
Cooperstown	1943 – 1952 Days above 85F: 261 Mean high temp: Summer: 81F, Winter: 36F	Days above 85F: 72 Mean high temp: Summer: 74F, Winter: 32F
Indian Lake	1907 – 1916 Days above 85F: 181 Mean high temp: Summer: 78F, Winter: 30F	Days above 85F: 21 Mean high temp: Summer: 73F, Winter: 28F
Cornwall	1948 – 1957 Days above 90F: 86 Mean high temp: Summer : 80F, Winter: 32F	Days above 90F: 56 Mean high temp: Summer: 79F, Winter: 32F
Woodstock	1940 – 1949 Days above 90F: 93 Mean high temp: Summer: 81F, Winter: 32F	Days above 90F: 57 Mean high temp: Summer: 80F, Winter: 34F
Berlin	1941 – 1950 Days above 90F: 54 Mean high temp: Summer: 77F, Winter: 30F	Days above 90F: 7 Mean high temp: Summer: 76F, Winter: 31F
Keene	1948 – 1957 Days above 90F: 115 Mean high temp: Summer: 82F, Winter: 37F	Days above 90F: 64 Mean high temp: Summer: 80F, Winter: 35F

New England & New York State Summary – 2

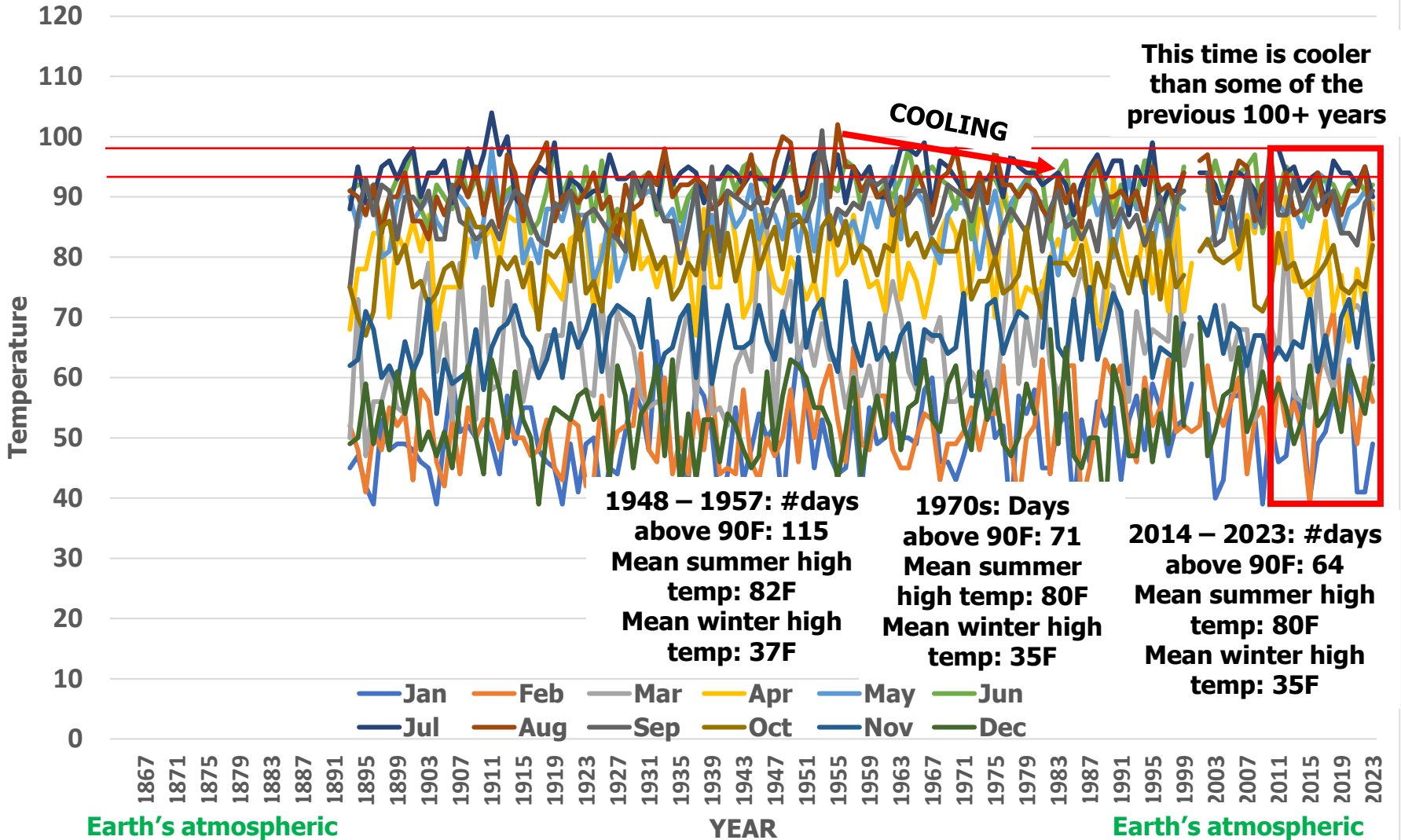
Location	Decade of Maximum Temperature	Recent Decade
Madison	1944 – 1933 Days above 90F: 71 Mean high temp: Summer : 80F, Winter: 32F	Days above 90F: 19 Mean high temp: Summer: 77F, Winter: 30F
Farmington	1937 – 1946 Days above 90F: 96 Mean high temp: Summer: 80F, Winter: 31F	Days above 90F: 20 Mean high temp: Summer: 76F, Winter: 31F
Waterville	1937 – 1946 Days above 90F: 87 Mean high temp: Summer: 81F, Winter: 33F	Days above 90F: 33 Mean high temp: Summer: 79F, Winter: 33F
Gardiner	1940 – 1949 Days above 90F: 93 Mean high temp: Summer: 81F, Winter: 33F	Days above 90F: 57 Mean high temp: Summer: 80F, Winter: 34F

- Stations with a material length of temperature measurement and free of a UHI influence generally all show cooling since their maximum temperatures; which were between 70 and 115 years ago.
- Almost all locations show cooling in the 1900s aligned with the work NCAR completed in 1970.
- CO₂ is not relevant to atmospheric temperatures

The following page is an example of the visual used to make this assessment The source of the data is included.

Monthly High Temperatures Keene, NH - °F

<https://www.weather.gov/wrh/Climate?wfo-gyx>



Earth's atmospheric CO2 content in 1900 ~300ppm

Earth's atmospheric CO2 content in 2023 ~425ppm